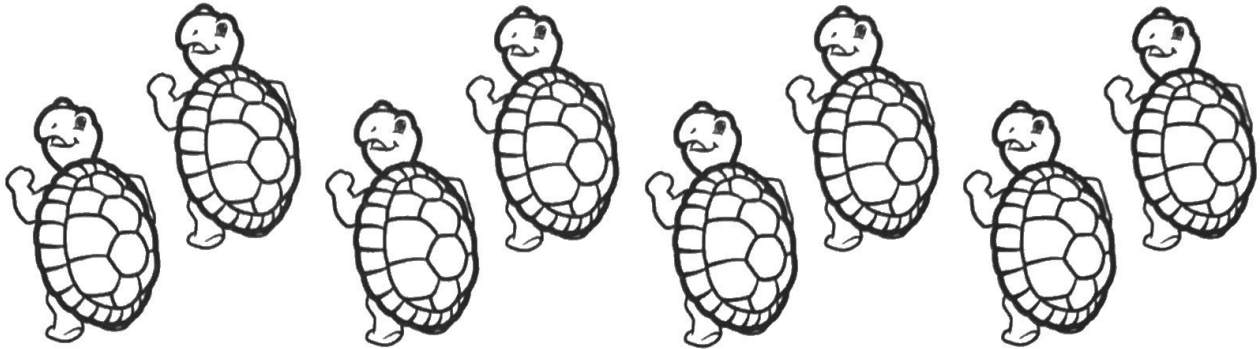
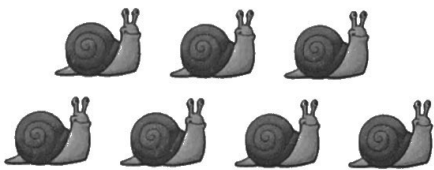




1. Color seven.



2. Fill in the  $\bigcirc$  under the combination that tells how many there are altogether.



$$3 + 4 = 7$$

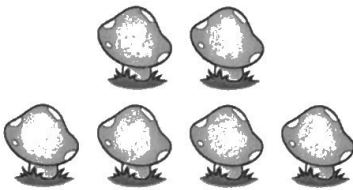
$\bigcirc$

$$7 - 3 = 4$$

$\bigcirc$

$$4 - 3 = 1$$

$\bigcirc$



$$6 - 2 = 4$$

$\bigcirc$

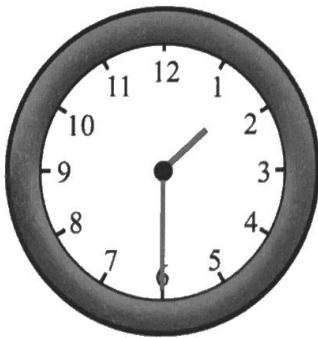
$$2 + 6 = 8$$

$\bigcirc$

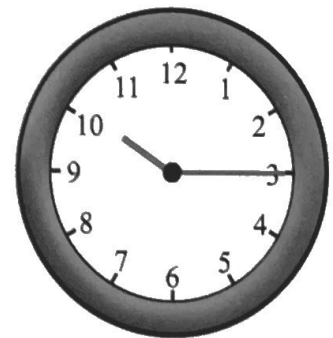
$$2 + 4 = 6$$

$\bigcirc$

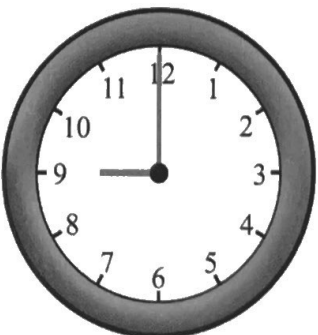
3. Match the clocks with the times.



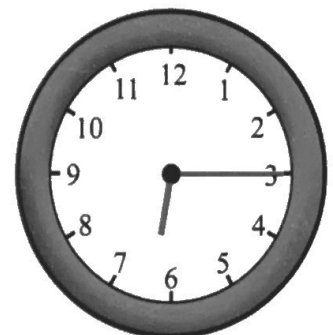
6:15



9:00



10:15



1:30